



City of Ocoee Reuse-Reclaimed Systems Map

- City of Ocoee Pumping and Storage Facility

■

Reuse Pump Station

▲

Effluent Disposal Facilities

Pipe Diameter (Inches):

—

No Size Data

—

2" Reclaim Line

—

4" Reclaim Line

—

6" Reclaim Line

—

8" Reclaim Line

—

10" Reclaim Line

—

12" Reclaim Line

—

16" Reclaim Line

—

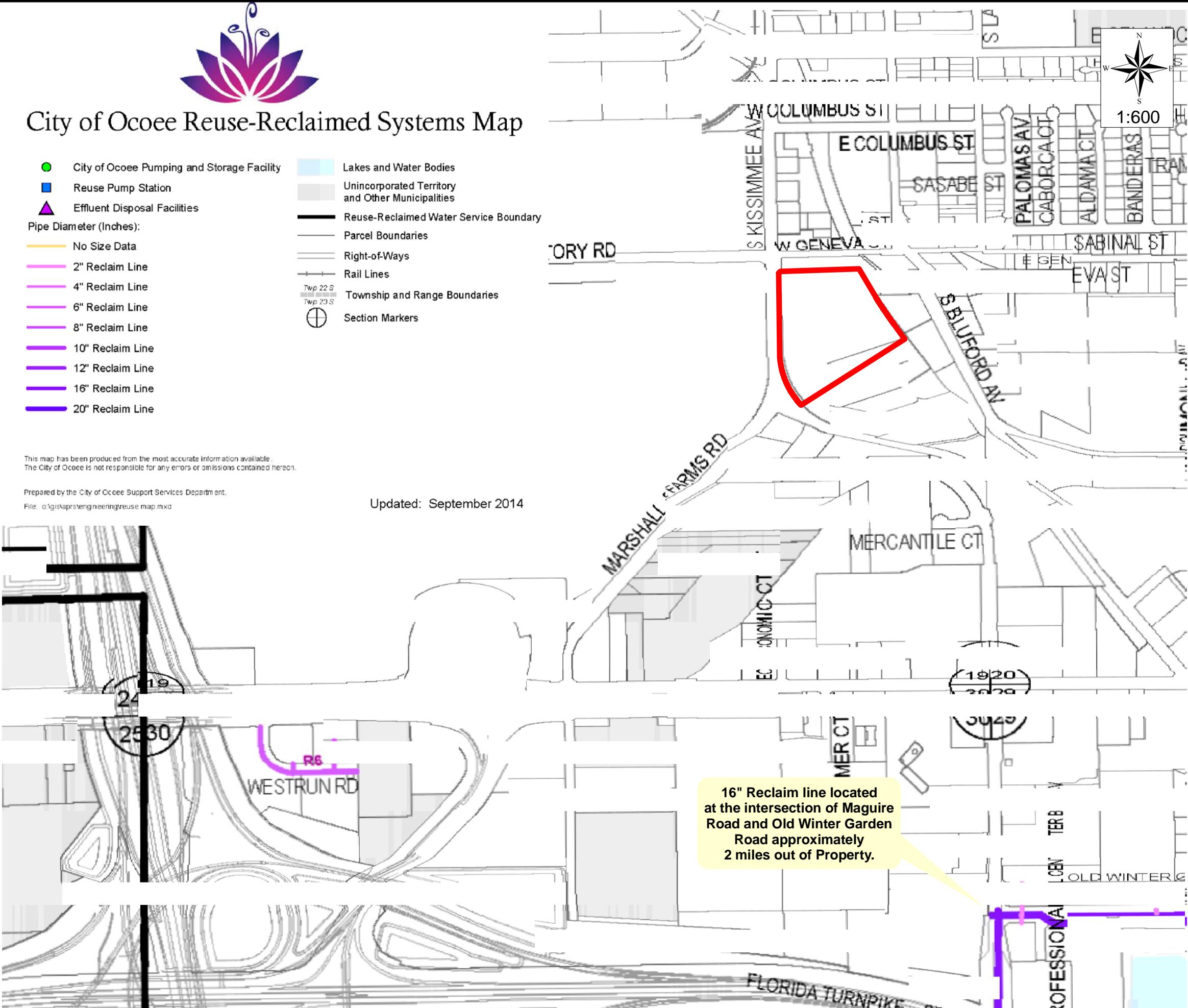
20" Reclaim Line
- Lakes and Water Bodies
- Unincorporated Territory and Other Municipalities
- Reuse-Reclaimed Water Service Boundary
- Parcel Boundaries
- Right-of-Ways
- Rail Lines
- Township and Range Boundaries
- ⊕

Section Markers

This map has been produced from the most accurate information available.
The City of Ocoee is not responsible for any errors or omissions contained herein.

Prepared by the City of Ocoee Support Services Department.
File: o:\gis\maps\engineering\reuse map.mxd

Updated: September 2014



Source: City of Ocoee Reuse-Reclaimed Systems Map obtained in digital format from City of Ocoee GIS.

SUMMIT PROPERTY

CITY OF OCOEE, FLORIDA

Legend

PROPERTY BOUNDARY (+/- 9.93 acres)

Non-Potable Water Facilities Map

DAVID W. MCINTYRE, INC.

REGISTERED PROFESSIONAL ENGINEER

NO. 12345, CATEGORY: CIVIL

FLORIDA, EXPIRATION DATE: 12/31/2024

Don A.

CIVIL ENGINEER

22C

W

PHONE: (417) 644-8318

JSH

SURVEYOR

1TH

19

PHONE: (417) 644-8318